



## WRAP

## SPEC SHEET

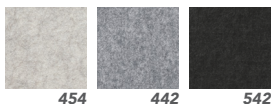
Lead Time: 6 - 8 weeks  
Warranty: 1 year

Please refer to a physical sample. Images are for an indicative reference only.  
Actual product may vary slightly, depending upon model configurations.  
Lead time subject to PET screen supplier's stock availability.

### FEATURES

- » Echo Panel® 24mm
- » 100% PET (60% recycled)
- » Low VOC
- » Global GreenTAG certified
- » Joiner colour option: Cream, Charcoal, Copper or Chrome

### PANEL COLOUR OPTIONS



### SPECIFICATIONS

SPECIFICATIONS	SIZE (mm)
Wrap A - End Tall Panel	475W X 1650H
Wrap B - End Short Panel	464W X 1400H
Wrap C - Flat Tall Panel	780W X 1650H
Wrap C2 - Flat Tall End Panel	780W X 1650H
Wrap D - Flat Short Panel	780W X 1400H
Wrap D2 - Flat Short End Panel	780W X 1400H
Wrap E - Step Up Panel	780W X 1650H

# Woven Image - Wrap.

Specifications

## Specifications

Composition	100% PET (60% post-consumer recycled)
Unit of Sale Net Weight (kg)	13.8
Care Instructions	See Woven Image EchoPanel Care & Cleaning Guide

## Test Results

Fire Test Result	ISO 9705: Group 1, ASTM E84 Unadhered: Class 2 or B, BS EN 13501.1: Classification B - s1, d0
Acoustic Performance Standard Test	AS ISO 354: 2006 (R2016)
Noise Reduction Coefficient (NRC)	EchoPanel® 24mm achieves: Direct fix: 0.65, 20mm air gap: 0.75, 50mm air gap: 0.85
Sound Absorption Average (SAA)	EchoPanel® 24mm achieves: Direct fix: 0.63
Weighted Sound Absorption Coefficient ( $\alpha_w$ ) Result	EchoPanel® 24mm achieves: Direct fix: 0.45 (MH), 20mm air gap: 0.50 (MH), 50mm air gap: 0.70 (MH)
Sound Absorption Class	D (Direct fix)
Additional Acoustic Information	Sound Absorption Class result is based on EchoPanel® 24mm. MH = Mid to High Frequency
Colour Fastness to Light Standard Test Method	ISO 105 B02
Colour Fastness Light Rating	6 - 7
VOC Emissions Results	EchoPanel 24mm achieves ASTM D5116: TVOC Emissions Rate: <0.02mg/m <sup>2</sup> /hr (7 days), and CDPH Standard Method v1.2: TVOC Emissions Rate: <0.054mg/m <sup>3</sup> ; Formaldehyde Emissions Rate: <2µg/m <sup>3</sup>
Sustainability Performance Details	EchoPanel achieves GreenTag Certification GreenRate: Level A & Health Rate Platinum, Red List Free, and has an International Living Future Institute Declare Label.

### Watts Commercial Furniture

350a Edgar St  
Bankstown NSW 2200  
PO Box 275 Condell Park 2200  
ABN: 54 064 557 893

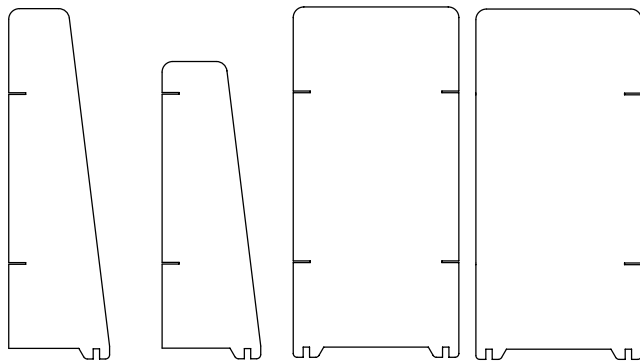
p: 02 9771 3966  
wcf.com.au  
sales.watts@wcf.com.au  
accounts.watts@wcf.com.au

Watts Commercial Furniture reserves the right to change any or all details without prior notice. Every effort has been made to ensure the information is accurate at the time of printing.

**December 2022**

## Woven Image - Wrap.

Please refer to a physical sample.  
 Images are for an indicative reference only.  
 Actual product may vary slightly, depending upon model configurations.

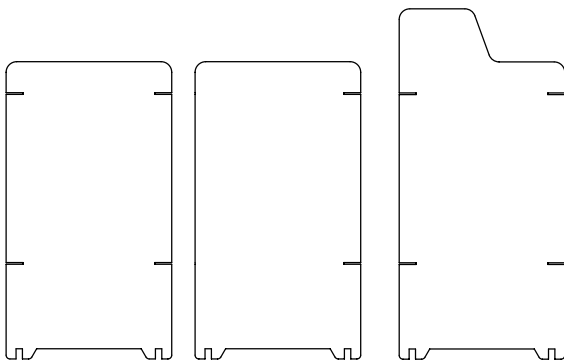


End Tall  
**Wrap A**  
475W x 1650H

End Tall  
**Wrap B**  
780W x 1650H

Flat Tall  
**Wrap C**  
780W x 1650H

Flat Tall End  
**Wrap C2**  
780W x 1650H



Flat Short  
**Wrap D**  
780W x 1400H

Flat Short End  
**Wrap D2**  
780W x 1400H

Step Up  
**Wrap E**  
780W x 1650H

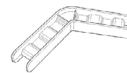
### JOINER TYPES:



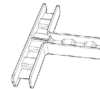
Joiner Straight  
195 x 25 x 28mm



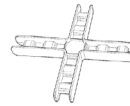
Joiner 90  
128.2 x 128.2 x 25 x 28mm



Joiner 120  
198 x 25 x 28mm



Joiner T  
195 x 128 x 25 x 28mm



Joiner X  
228 x 228 x 25 x 28mm



Joiner Y  
198 x 198 x 25 x 28mm



### Watts Commercial Furniture

350a Edgar St  
 Bankstown NSW 2200  
 PO Box 275 Condell Park 2200  
 ABN: 54 064 557 893

p: 02 9771 3966  
 wcf.com.au  
 sales.watts@wcf.com.au  
 accounts.watts@wcf.com.au

Watts Commercial Furniture reserves the right to change any or all details without prior notice. Every effort has been made to ensure the information is accurate at the time of printing.

**December 2022**