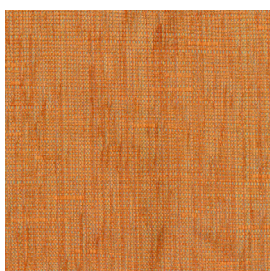


## Finishes - Fabric.

Please refer to a physical sample.  
Colours are for an indicative reference only.  
Actual colour and finish may vary slightly.

### Warwick - Flynn



Mandarin



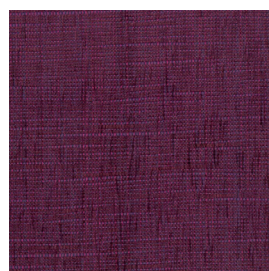
Flame



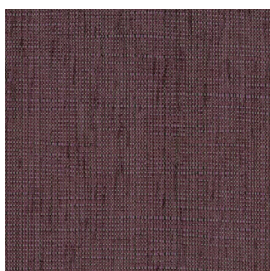
Chili



Fuchsia



Orchid



Eggplant



Natural



Sand



Dune



Mushroom



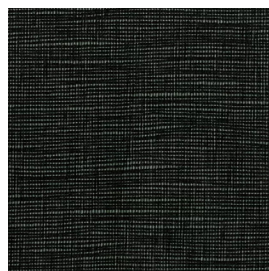
Bark



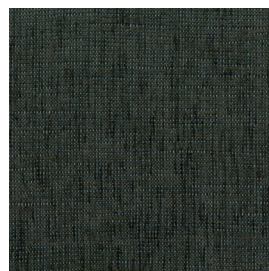
Cobblestone



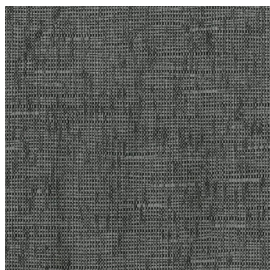
Mocha



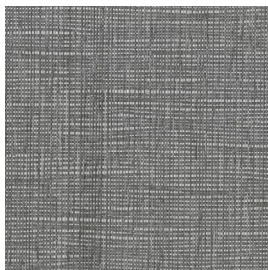
Onyx



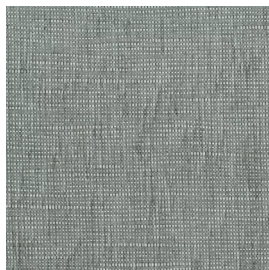
Asphalt



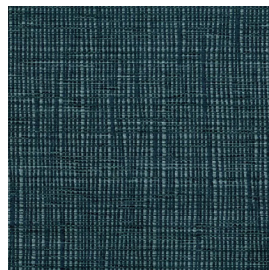
Storm



Steel



Silver



Denim



Navy

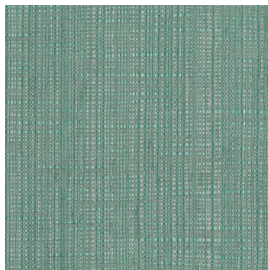
## Finishes - Fabric.

Please refer to a physical sample.  
Colours are for an indicative reference only.  
Actual colour and finish may vary slightly.

Warwick - Flynn



Duckegg



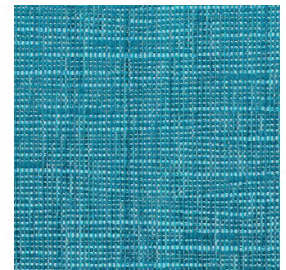
Seafoam



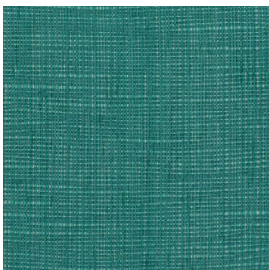
Ivy



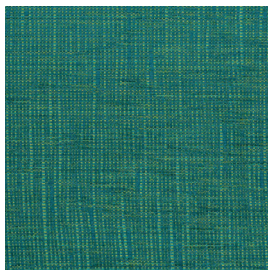
Jungle



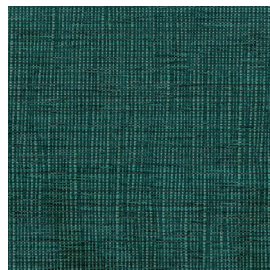
Ocean



Teal



Peacock



Dusk



Forest



Grass



Buttercup

### Watts Commercial Furniture

350a Edgar St  
Bankstown NSW 2200  
PO Box 275 Condell Park 2200  
ABN: 54 064 557 893

p: 02 9771 3966  
wcf.com.au  
sales.watts@wcf.com.au  
accounts.watts@wcf.com.au

Watts Commercial Furniture reserves the right to change any or all details without prior notice. Every effort has been made to ensure the information is accurate at the time of printing.

**September 2022**

## Warwick - Flynn.

### Specifications

| Specifications      |   |
|---------------------|---|
| Composition         | 60% Polyester, 40% Acrylic  |
| Pattern Match       | No  |
| Pattern Repeat (cm) | Plain   |
| Railroaded          | Plain   |
| Width (cm)          | 137   |
| Roll Size (approx)  | 50m   |
| Weight (gsm)        | 315   |
| Origin              | Australian  |
| Stain Repellent     | No  |
| FIAA Care Label     | FIAA Care Label 1 - Pile Fabrics, Velvets & Chenille Wovens                         |
| Guarantee           | 3 Years in accordance with fabric manufacturer's product type and care instructions |

| Test Results  |                    |
|---|--------------------|
| Wyzenbeek<br><small>(ASTM D3597, mesh, 4lb/3lb)</small>                       | 100,000 Cycles     |
| Seam Slippage (mm)<br><small>(ISO 13936-2, Load 180)</small>                  | Warp 3.4, Weft 4.1 |
| Pilling Resistance<br><small>(ISO 12945-2)</small>                            | 5                  |
| Colourfastness to Light<br><small>Xenon arc (ISO 105-B02, blue std 6)</small> | >6                 |
| Free and Hydrolysed Formaldehyde<br><small>(ISO 14184-1:1998)</small>         | Not Detectable     |
| Flammability AS/NZS 1530.3  |                    |
| Ignitability (0-20)   | 11                 |
| Spread of Flame (0-10)  | 0                  |
| Heat Involved (0-10)  | 2                  |
| Smoke Developed (0-10)  | 5                  |
| Oekotex Standard 100  | 005339.0 CENTROCOT |

### Watts Commercial Furniture

350a Edgar St  
Bankstown NSW 2200  
PO Box 275 Condell Park 2200  
ABN: 54 064 557 893

p: 02 9771 3966  
wcf.com.au  
sales.watts@wcf.com.au  
accounts.watts@wcf.com.au

Watts Commercial Furniture reserves the right to change any or all details without prior notice. Every effort has been made to ensure the information is accurate at the time of printing.

**September 2022**