

## Finishes - Fabric.

Please refer to a physical sample.  
Colours are for an indicative reference only.  
Actual colour and finish may vary slightly.

Warwick - Flynn



Mandarin



Flame



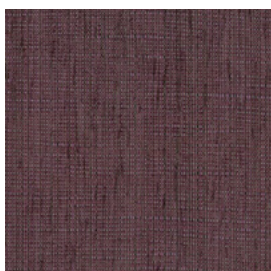
Chili



Fuchsia



Orchid



Eggplant



Natural



Sand



Dune



Mushroom



Bark



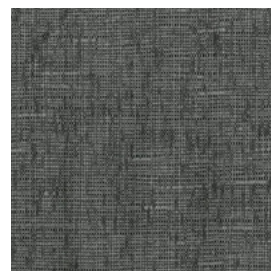
Mocha



Onyx



Asphalt



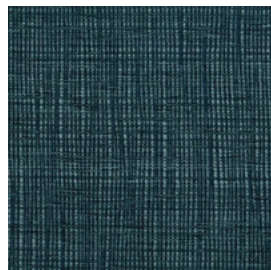
Storm



Steel



Silver



Denim



Navy

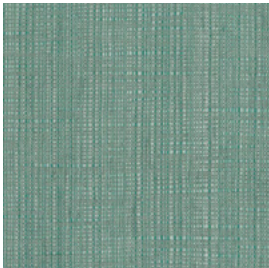


Duckegg

## Finishes - Fabric.

Please refer to a physical sample.  
Colours are for an indicative reference only.  
Actual colour and finish may vary slightly.

Warwick - Flynn



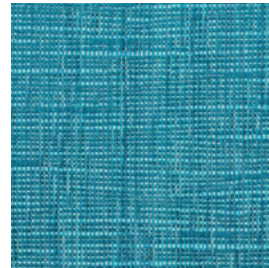
Seafoam



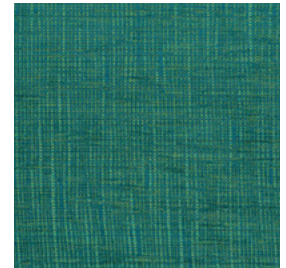
Ivy



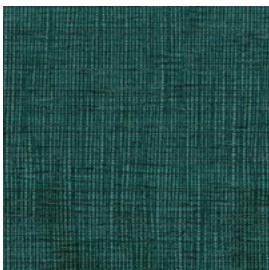
Jungle



Ocean



Peacock



Dusk



Forest



Grass



Buttercup

### Watts Commercial Furniture

350a Edgar St  
Bankstown NSW 2200  
PO Box 275 Condell Park 2200  
ABN: 54 064 557 893

p: 02 9771 3966  
wcf.com.au  
sales.watts@wcf.com.au  
accounts.watts@wcf.com.au

Watts Commercial Furniture reserves the right to change any or all details without prior notice. Every effort has been made to ensure the information is accurate at the time of printing.

**September 2024**

## Warwick - Flynn.

### Specifications

#### Specifications

Composition	60% Polyester, 40% Acrylic
Pattern Match	No
Pattern Repeat (cm)	Plain
Railroaded	Plain
Width (cm)	137
Roll Size (approx)	50m
Weight (gsm)	315
Origin	Australian
Stain Repellent	No
FIAA Care Label	FIAA Care Label 1 - Pile Fabrics, Velvets & Chenille Wovens
Guarantee	3 Years in accordance with fabric manufacturer's product type and care instructions

#### Test Results

Wyzenbeek (ASTM D3597, mesh, 4lb/3lb)	100,000 Cycles
Seam Slippage (mm) (ISO 13936-2, Load 180)	Warp 3.4, Weft 4.1
Pilling Resistance (ISO 12945-2)	5
Colourfastness to Light Xenon arc (ISO 105-B02, blue std 6)	>6
Free and Hydrolysed Formaldehyde (ISO 14184-1:1998)	Not Detectable
Flammability AS/NZS 1530.3	
Ignitability (0-20)	11
Spread of Flame (0-10)	0
Heat Involved (0-10)	2
Smoke Developed (0-10)	5
Oekotex Standard 100	005339.0 CENTROCOT

#### Watts Commercial Furniture

350a Edgar St  
Bankstown NSW 2200  
PO Box 275 Condell Park 2200  
ABN: 54 064 557 893

p: 02 9771 3966  
wcf.com.au  
sales.watts@wcf.com.au  
accounts.watts@wcf.com.au

Watts Commercial Furniture reserves the right to change any or all details without prior notice. Every effort has been made to ensure the information is accurate at the time of printing.

**September 2024**