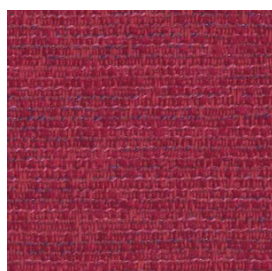


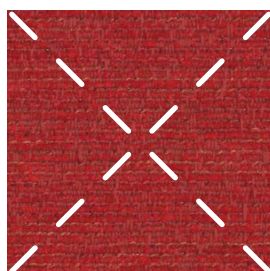
Finishes - Fabric.

Please refer to a physical sample.
Colours are for an indicative reference only.
Actual colour and finish may vary slightly.

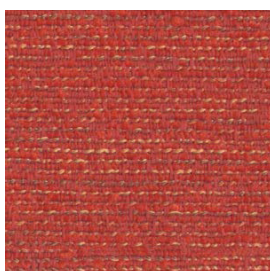
Materialised - Crypton Mia



Cranberry



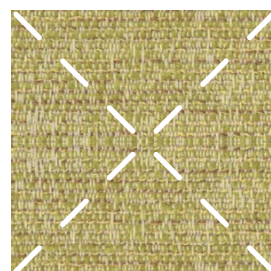
Tomato **(*EOL)**
LIMITED STOCK



Cayenne



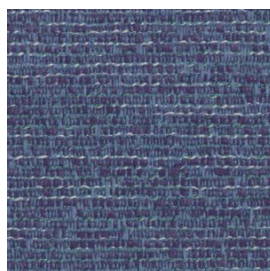
Tuscan Sun **(*EOL)**
LIMITED STOCK



Celery **(*EOL)**



Pacific



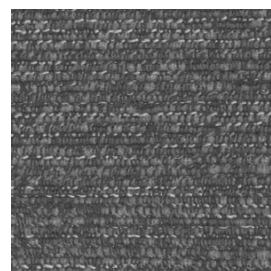
Lapis



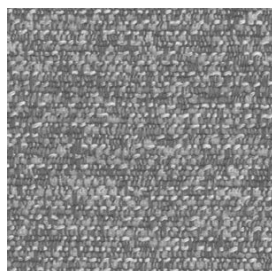
North Sea



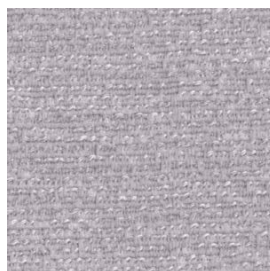
Carbon



Fannel



Silver Lining



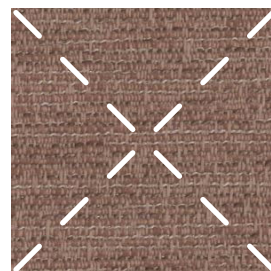
Sand



Natural



Wheat



Fawn **(*EOL)**



Earth

Legend

(*EOL) End of Line (Discontinued)

Materialised - Crypton Mia.

Specifications

Specifications	
Composition	100% Polyester with Crypton waterproof backing
Pattern Match	
Pattern Repeat (cm)	No
Railroaded	
Width (cm)	137
Roll Size (approx)	100
Weight (gsm)	480
Origin	
Water Repellent / Soil Repellent	Yes / Yes
Care Label	Mat 110 – Textile Upholstery & Bleach Cleanable
Guarantee	2 Years in accordance with our product type and care instructions

Test Results	
Martindale Wyzenbeek	50,000 Abrasions 100,000 double rubs
Flammability AS/NZS 1530.3	
Ignitability (0-20)	11
Spread of Flame (0-10)	0
Heat Involved (0-10)	2
Smoke Developed (0-10)	5